

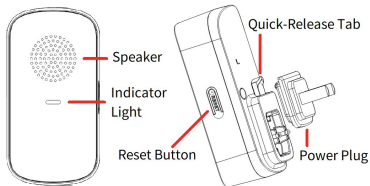


Quick Start Guide

Singer 2



Know your Singer 2



LED Indicator Status:

Flashing Green: Hotspot Enabled

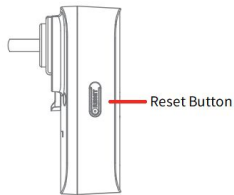
Flashing Red: WiFi disconnected

Solid Green: Booting Up/ Online

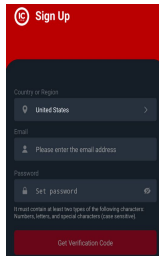
Solid Red: Undergoing Reset

Initialization

Step 1 Plug in the chime to a wall outlet, then after a few moments, tap the reset button to enable the Wi-Fi hotspot. The device will prompt "Wi-Fi hotspot is enabled" and the indicator light will flash green.

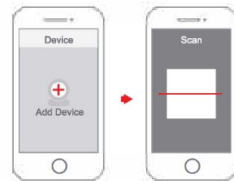


Step 2 Download the **IC View Pro** app from the Android Play Store or Apple App store. Launch the app and create an account if it's the first-time use, then sign in.



Step 3 Add the Device. Tap "+" at the upper-right corner on the Home page and tap SN/Scan.

Step 4 Scan QR code on the bottom of the Singer-2. You can also manually enter the serial number on the following page.



Step 5 Tap "Next" if you should see a flashing green light on the front of the camera that indicates the hotspot is active (If not, press the reset button on the device).

Step 6 Connect your mobile phone with hotspot. The Singer 2's hotspot Wi-Fi name will appear as the *SINGER2-device serial number*.

Package Contents



Singer 2



Power Adapter



Instruction Manual



QR Code

Linking to a Dinger Pro 2

Changing Ringtones

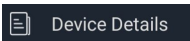
Frequently Asked Questions

Step 7 Go back to the app, and then set a password for the Singer 2. Follow the app instructions to connect to the chime.

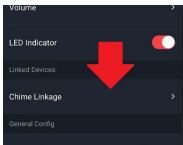


This setup assumes you have added the **Dinger Pro 2** video doorbell to the IC View Pro app. The Singer 2 can be bound to multiple Dinger Pro 2 doorbells at the same time.

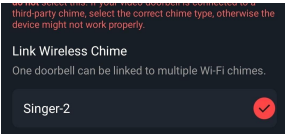
1 On the IC View Pro app **Home** interface, select the Dinger 2 Pro doorbell, and then tap **Device Details**.



2 Tap Chime Linkage. A list of detected wireless chimes will appear.



3 Select the desired chime on the list, and then tap **Save** to add.

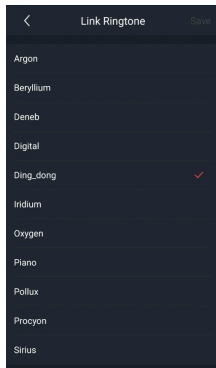


The Singer 2 comes with 11 different ringtones for the chime you can use in the IC View Pro app.

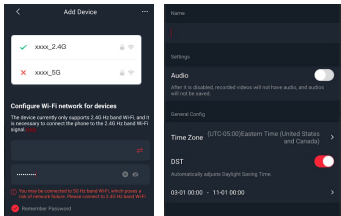
Tap on **Device Details**, then tap on **Link Ringtone**.



You can then select your desired ringtone from the list. Tap **Save** on the upper right when finished.



Step 8 Login to the local Wi-Fi network. Then, create a device name and set the time zone.



How do I reset the device to factory settings?

Press and hold the reset button for about 10 seconds. The red light will turn on, then off, and you'll hear, "Device is undergoing hard reset."

What should I do if the device isn't working properly?

Try resetting the device to its default settings, then set it up again.

How do I enter Wi-Fi setup mode?

Press the reset button once. The green light will start flashing, and you'll hear, "Wi-Fi hotspot is enabled."

Why isn't the device online?

Check the indicator light. If it's flashing red, the device couldn't connect to the network. Make sure your router is working, the WiFi credentials are correct and try reconnecting the device.

Why is the connection taking too long?

- a. If your phone takes too long to connect after the hotspot is turned on, the device may have time out.
- b. The device may begin the setup process before the app says "Waiting to connect to the network."